

Nova 1W Base Station Quick Start Guide



July 2017
Version 1.1

Introduction

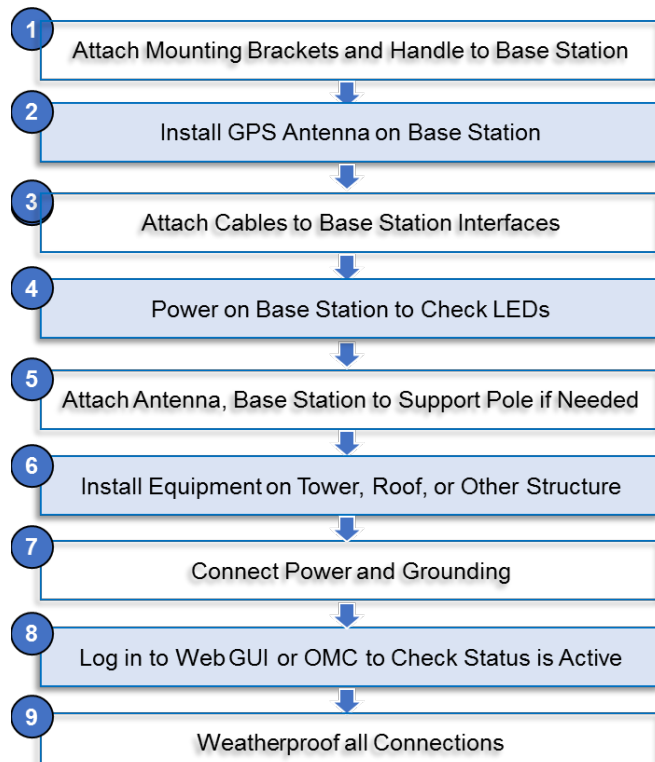
This quick start guide is intended for experienced installers. It provides high-level milestones for installing the BaiCells Nova 1W Base Station. For more details, please refer to the *BaiCells Nova 1W Base Station Installation Guide* on the website.

Prepare



Level bar	Marking pen	Knife	Pliers	Wrench
Percussion drill and drill heads	Hammer	Cross screw driver	Cable vice (crimper)	Tape measure
5mm L-shape Allen wrench	Torx screw driver	T7 screwdriver head	Cable Stripper	

Overview



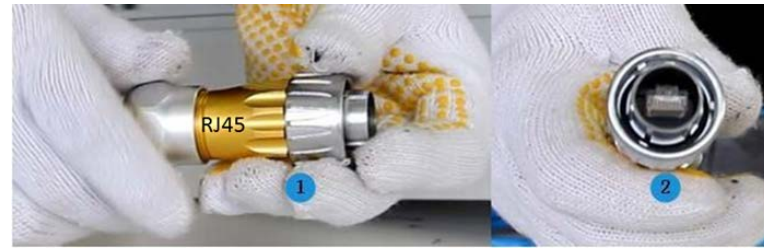
S
t
a
g
i
n
g

GPS Antenna

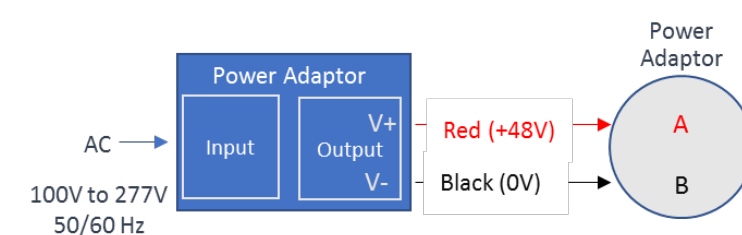
Install GPS lightning arrester before attaching antenna to base station.



Ethernet Connector



Power Connector



Grounding and RF Cables



Check LEDs

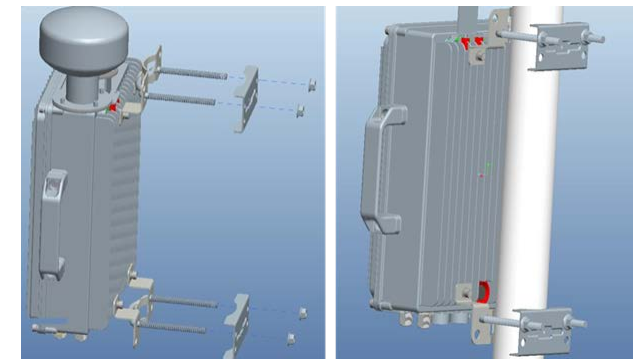
Power on the base station and check LED status:



LED	Color	Status	Description
PWR	Green	Steady on	Power is on
		Off	No power supply
ALM	Red	Steady on	Hardware alarm (e.g., cable connection failure)
		Off	No alarms
RUN	Green	Fast blink: 0.125s on, 0.125s off	Base station is booting up
		Slow blink: 1s on, 1s off	Base station is booted and operational
		Off	No power input, or board failure
ACT	Green	Steady on	Active cell site. The transmitting channel is working.
		Off	Inactive cell site. The transmitting channel is not working.

Install

- Support pole between 1.4 to 2 inches (35 to 50 millimeters)



- GPS - lightning arrester must be installed prior to connecting the GPS antenna to the base station. Positioning requirements at final location:

- Space atop within 45° to 90° is not blocked by any buildings
- At least 3 feet (.9 meters) from other transmitting devices
- No metal objects within a range of 3.3 feet (1 meter) of the lightning arrester
- Installed within 45° to the lightning rod

- RF Antenna (Omni)

- Top of pole with clamp beneath antenna should be at same level on pole
- Precisely vertical
- No metal objects within 3.3 feet (1 meter) of the omni
- Top of antenna should fall within 45° safety angle towards lightning rod
- High enough to meet coverage requirements
- Verify grounding and lightning protection

- RF Antenna (Directional)



Check Base Station Status in Software

Web GUI login - <http://192.168.1.1> (admin/admin), **BTS Info > Status Info > Cell Status = Active**

OMC login - <https://cloudcore.cloudapp.net/cloudcore/> (your email address/your password), **eNB > Monitor > Active Status**

Weatherproof Connections

At least 3 layers of tape, last one bottoms up and tight

